

Summary of Work-Related Fatalities with Hispanic Victims in Washington State, 1998-2002, Washington Fatality Assessment and Control Evaluation (FACE) Program

The ethnicity of workers killed on the job is one of the many factors tracked by the Washington State Fatality Assessment and Control Evaluation (FACE) Program. To better understand these fatalities, data between 1998 and 2002 were investigated and described by the victim's ethnicity.

Figure 1 shows the percentage of fatalities with Hispanic victims in Washington State compared to the national data. Overall in the US, the percentage of fatalities with Hispanic victims is rising slowly from 8.6% in 1992 to 15.2% in 2002. In Washington State, this percentage has also increased, but with much variability due to the relatively small number of incidents. In the time period between 1992 and 2002, the Washington State average was 9.8%, while that of the US was 11.5%. In the more recent years between 1998 and 2002, the WA average was 13.5% and the national average 13.6%. **Comparable state and national data were derived from the US Bureau of Labor Statistics (BLS) Census of Fatal Occupational Injuries (CFOI) Program [BLS CFOI Profiles System], which has collected fatality data since 1992.**

Table 1 shows the industry divisions with the most work-related fatalities for Hispanic and non-Hispanic workers. For Hispanic workers, the highest number was in agriculture, forestry, and fishing. For non-Hispanic workers, manufacturing, construction, and transportation and public utilities were essentially tied for the most fatalities. More information on the specific industries with the most fatalities is listed in Table 2. For Hispanic workers, the deciduous tree fruit industry has the most deaths, whereas for non-Hispanic workers, logging and trucking kill the most workers. **Data for all of the tables were from the Washington State FACE Program for the time periods between 1998 and 2002 and may differ slightly from the BLS data in Figure 1.**

Table 3 shows the most frequent incident types for Hispanic and non-Hispanic workers. The top-five incident types are the same for both groups, with motor vehicle-related incidents being the leading cause of death for both groups. For Hispanic workers, homicides account for 13% of the deaths, while only 6% of non-Hispanic workers' deaths. When the homicides are investigated further, 5 of the 7 homicides of Hispanic workers were in agriculture, forestry and fishing, with all of the assailants potentially being a family member or acquaintance. For the non-Hispanic workers, the industry distribution is more diffuse, but 6 of the 22 deaths were of governmental employees and in all of those incidents, the assailant was a client.

Table 4 lists the county and year of the incident, the incident type and gives a brief description.

The relatively small number of fatalities in Washington State may make the small differences seen in the data unstable (e.g. more Hispanic workers are murdered on the job than are killed by falling objects), but the larger trends are more stable (e.g. the largest proportion of Hispanic workers are killed in the agriculture, forestry, and fishing industry). These data are also presented as fatality numbers, not fatality rates, which would take into consideration the number of Hispanic and non-Hispanic workers in that industry. The calculation of rates could help in future assessments given the high hazard nature of the agriculture industry and the high proportion of Hispanic workers in that industry.

Table 1 Frequency of fatalities by the ethnicity and industry division (SIC code), Washington State, WA FACE Program, incident dates 1998-2002 (included only divisions with 10 or more fatalities).

Industry Division (SIC code)	Hispanic		Not of Hispanic Origin		Total	
	#	%	#	%	#	%
Agriculture, Forestry, & Fishing	22	34.4	42	65.6	64	100
Construction	11	13.4	70	85.4	82	100
Manufacturing	6	7.8	71	92.2	77	100
Transportation and Public Utils.	5	6.6	69	90.8	76	100
Wholesale Trade	2	8.7	20	87.0	23	100
Retail Trade	3	10.0	27	90.0	30	100
Service	4	9.1	39	88.6	44	100
Government	1	2.6	37	94.9	39	100
Total	55	12.4	382	86.2	443	100

Table 2 Top nine industries (Standard Industrial classification [SIC] codes) with the most work-related fatalities, Hispanic and non-Hispanic workers, in Washington State, 1998-2002, WA FACE Program.

Hispanic Workers			Non-Hispanic Workers		
Industry (4 digit SIC code)	#	%	Industry (4 digit SIC code)	#	%
Deciduous tree fruit orchards	8	14.5	Logging	24	6.3
Farm management services	3	5.5	Trucking, except local	17	4.5
Concrete work	2	3.6	Local trucking, without storage	13	3.4
Crop preparation services for market	2	3.6	Police protection	11	2.9
Nonresidential buildings construction	2	3.6	Highway & street construction	11	2.9
Special product sawmills, nec	2	3.6	National security	9	2.4
Logging	2	3.6	Utility construction	8	2.1
Trucking, except local	2	3.6	Land, mineral, wildlife, & forest cons.	8	2.1
Plumbing, heating, and air-conditioning	2	3.6	Fishing (finfish)	7	1.8
Total	55	100	Total	382	100

Table 3 Five most frequent types of work-related fatalities, Hispanic and non-Hispanic workers, in Washington State, 1998-2001, WA FACE Program.

Hispanic Workers			Non-Hispanic Workers		
Incident Type	#	%	Incident Type	#	%
Motor vehicle	15	27.3	Motor vehicle	122	31.9
Machinery	14	25.5	Machinery	51	13.4
Homicide	7	12.7	Fall	45	11.8
Fall	6	10.9	Struck by falling object	30	7.9
Struck by falling object	4	7.3	Homicide	22	5.8

Table 4. List of incidents with Hispanic victims, WA FACE Program, 1998-2002.

County	Year	Incident Type	Description
Adams	2000	Fall	Construction laborer fell 10 feet from catwalk to concrete
	2001	Motor vehicle	Pickup truck crash
Benton	1998	Motor vehicle	Cable installer rolled vehicle
Chelan	1998	Nature/Environment	Heat stroke
	2002	Fall	Fell from an orchard ladder
	2002	Machinery	Orchard tractor rollover
Clallam	2000	Machinery	Deckhand struck by falling tank
Cowlitz	2002	Machinery	Fell into hay chopping machine
Douglas	2000	Motor vehicle	Truck roll-over
Franklin	1999	Motor vehicle	Roll-over automobile incident
	2000	Machinery	Farm worker caught in potato harvester
	2000	Motor vehicle	Vehicle rollover
	2001	Machinery	Rollover of orchard tractor
	2001	Motor vehicle	Farm laborer's pick-up hit by garbage truck
Grant	1998	Drowning	Fell into irrigation canal and was drowned
	1998	Drowning	Attempted to rescue co-worker from irrigation canal, was drowned
	1998	Fall	Fell through insulation on roof and hit concrete pad 32 feet below
	1998	Poisoning	Explosion of silicon tetrachloride pipe exposed worker to hydrochloric acid gas
	2001	Machinery	Forklift rollover
	2001	Machinery	Pinned in truck cab by load of dirt from track hoe
	2002	Electrocution	Electrocuted when irrigation system contacted overhead powerline
Grays Harbor	1998	Homicide	Cedar salvage worker was shot
	2002	Struck by falling object	Struck by fallen tree
King	1998	Motor vehicle	Motor vehicle collision
	1999	Motor vehicle	Flatbed truck carrying plywood forms crashed
	2000	Machinery	Backhoe fell on construction worker in trench
	2000	Struck by falling object	Trench cave-in
	2001	Struck by falling object	Pinned under van when jack failed
Kitsap	2000	Motor vehicle	Head-on motor vehicle collision with another vehicle
Kittitas	1998	Machinery	Fell 15 feet off the top of a hay de-stacker
Klickitat	2002	Motor vehicle	Semi-truck crash
Lewis	1998	Machinery	Struck by log loader
	2002	Motor vehicle	Automobile in head-on collision
Mason	1999	Flying object/Caught in	Struck by log at helicopter landing at logging site
	2001	Fall	Brushpicker fell from tree

	2002 Flying object/Caught in	Pinned under double wide home
Okanogan	2002 Homicide	Orchard worker stabbed with knife by co-worker
Pacific	1998 Struck by falling object	Struck by cedar block falling from sling lifted by helicopter
Pierce	1999 Fall	Victim fell 14 feet from roof
	2001 Machinery	Crushed between forklift and door
Skagit	2002 Motor vehicle	Pickup truck backed into water filled drainage ditch
Snohomish	2002 Electrocutation	Boom crane operator electrocuted
Thurston	2000 Machinery	Pulled into depalletizer
Yakima	1998 Fall	Thrown from horse
	1998 Homicide	Orchard worker was shot
	1998 Homicide	Orchard worker was shot
	1998 Homicide	Murdered - shot
	1998 Motor vehicle	While driving tractor on road was struck by truck
	2000 Electrocutation	Worker in scissor lift came in contact with 72 KV power line
	2000 Homicide	Murdered by shot from handgun
	2000 Motor vehicle	Tractor rollover
	2001 Machinery	Buried in dirt inside hopper
	2001 Motor vehicle	Passenger thrown from pickup cab
	2002 Homicide	Variety store owner stabbed
	2002 Machinery	Tractor rollover

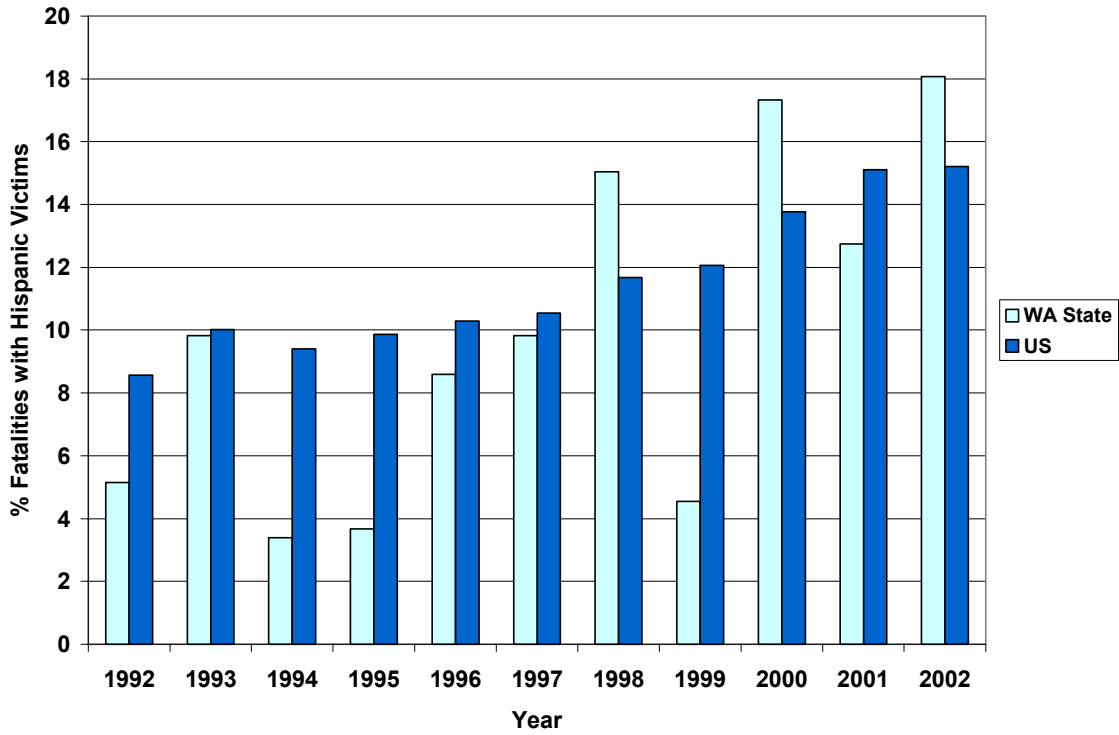


Figure 1. Percent of work-related fatalities with Hispanic victims, Washington State and the nation, 1992-2002. (Source of US Bureau of Labor Statistics, Census of Fatal Occupational Injuries [CFOI] Program).

NOTE: Data for Figure 1 were from the CFOI Program because this program keeps data at the state and national level and has done so since 1992.