

Injury Fact Sheet



Caught in-between injuries in logging Industry

Over 90 loggers were seriously injured when caught in, under or between objects from 2000-2004 resulting in over 11,000 days off work



Injuries from these logging accidents were so serious, workers had to take time off from work to recover and in some cases, were permanently disabled. These injuries are costly and affect your industrial insurance premiums. They contribute to the reason for the average base rate of \$8.74 per hour per employee paid by logging employers in 2006. If your company has a higher than average number of injuries (claims), your “experience rating” could increase by as much as 25% in one year to \$10.91 per hour per employee.

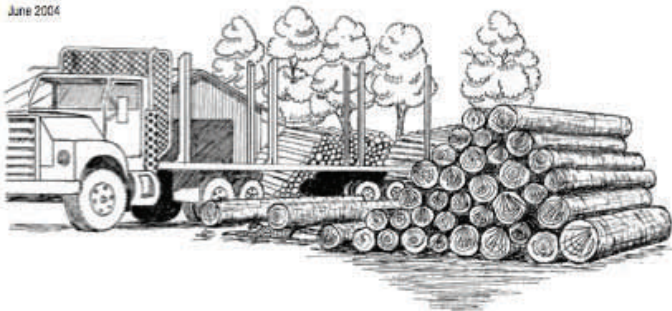
Stated in another way, if you had 10 full-time employees and had an average number of injuries (claims), you would pay about \$174,800 in premiums in 2006. If your experience rating increased by 25% because you had higher than average injuries, you would pay about \$43,400 more or \$218,200 in premiums on 2006.

Causes or sources of injury

LOG PILE ROLLS ONTO TRUCK DRIVER

Safety Alert

June 2004



These injuries occurred as a result of workers being caught in, under, or between logs, chains and chokers, or logging machinery and equipment. Some of these injuries occurred during maintenance and repair activities, others during logging operations.

Ways to prevent injuries

Make sure you and your employees are “in the clear” when working:

- Around equipment
- In the rigging
- On the landing

Approach equipment only after notifying operator of intention to do so and receiving the okay to go approach

Clear and use an escape path when falling timber

Move equipment only when assured all employees are in a safe location