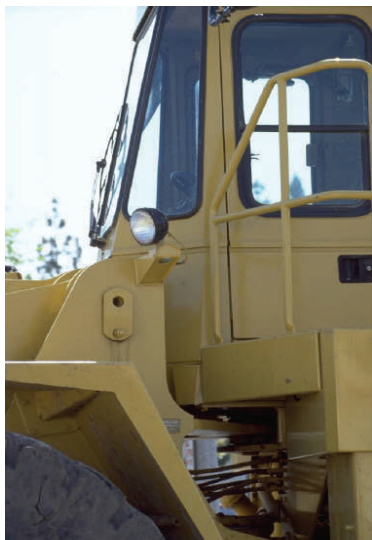


## Injury Fact Sheet



# Wholesale Machinery Dealers—Struck-by/Against Injuries

## Over 100 wholesale machinery dealer workers sustained serious struck by/against injuries in the years 2000–2004



These injuries were so serious, workers had to take time off to recover, or in some cases were permanently disabled. Serious injuries from struck by or against are costly and affect your industrial insurance premiums. They contribute to the reason for the average base rate of 1.68 \* per hour per employee paid by wholesaler machinery employers in 2006. If your company has a higher than average number of injuries (claims), your “experience rating” could increase by as much as 25% in one year to \$2.10 per hour per employee.

Stated in another way, if you had 20 full-time employees and had an average number of injuries (claims), you would pay about \$67,200 in premiums in 2006. If your experience rating increased by 25% because you had higher than average injuries, you would pay about \$16,800 more or \$84,000 in premiums in 2006.

### Causes of struck by injuries

Some of the most common sources of injuries that workers at wholesale machinery dealers suffer are from being struck by powered industrial trucks or the materials they handle.



### Ways to prevent struck by injuries

- Make sure that forklifts operators are given formal instruction, hands-on training and periodic evaluation as required by DOSH standards.
- Maintain forklifts in safe condition free of defective or missing parts through daily visual checks before each shift and by providing regular preventive maintenance.
- Use the appropriate forklift and attachments based on driving location and size of load. Check the load for stability before you pick it up.
- Make sure that the surface where a forklift operates is free from bumps, loose objects, or depressions to avoid losing control, dropping the load, and overturn.

Learn more on forklift safety by going to L&I's online safety courses at:

<http://www.lni.wa.gov/Safety/TrainTools/Online/Courses/default.asp>