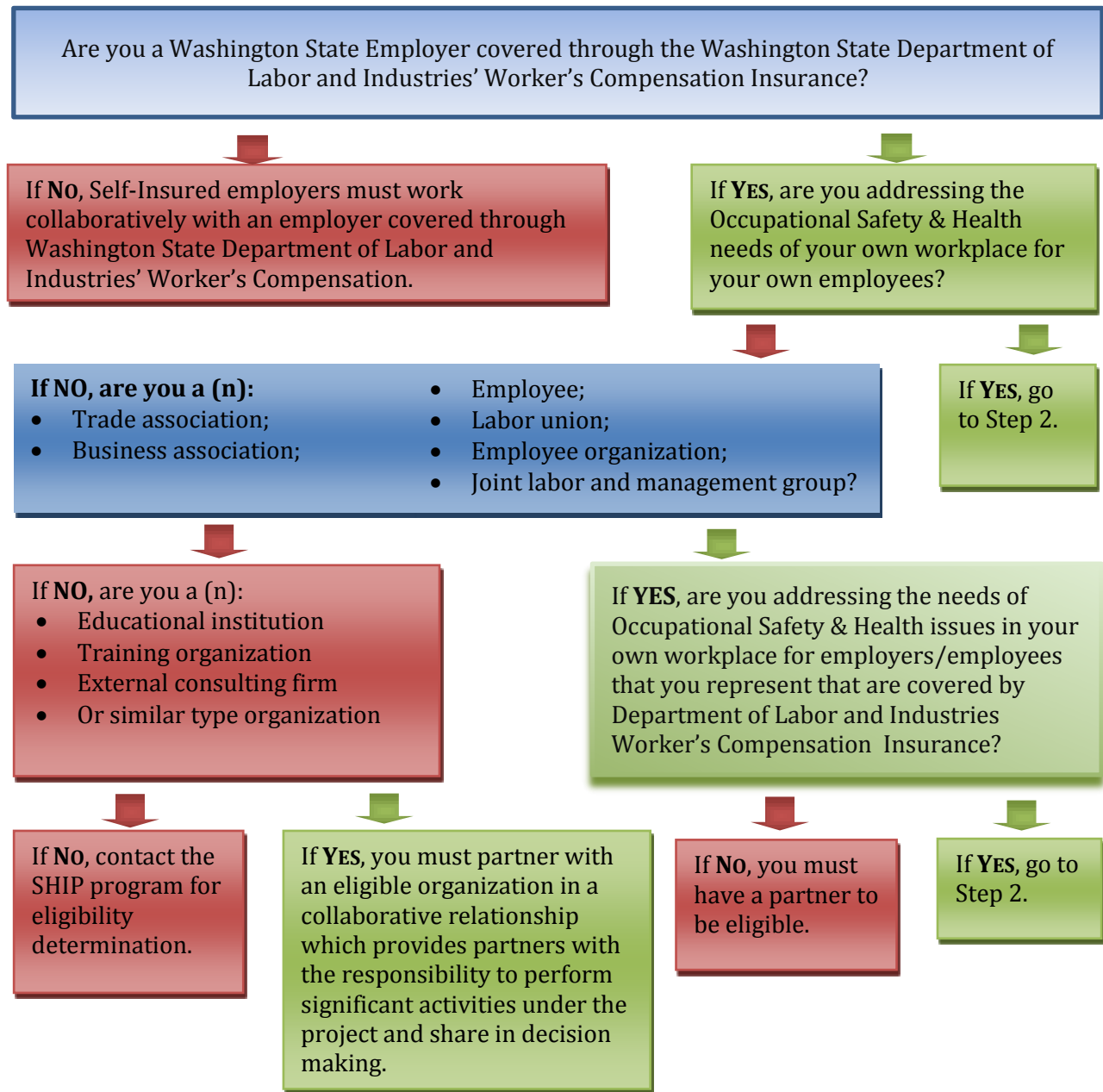


## STEP 1 – SHIP S&H GRANT ELIGIBILITY: ARE YOU ELIGIBLE TO APPLY?



If **YES**, are you addressing the Occupational Safety & Health needs of your own workplace for your own employees?

\*\* If your organization is required to have a partner/collaborator in order to be eligible to receive a grant, the partner you choose must be eligible on their own without a partner/collaborator. Applicant Organizations who do not need a partner include those entities that are seeking to address solutions to problems for those they represent.

**NOTE:** All products produced, whether by the grantee or a subcontractor to the grantee, as a result of a SHIP grant are in the public domain and cannot be copyrighted, patented, claimed as trade secrets, or otherwise restricted in anyway.

When determining the **type of organization** to check on your application, consider the following:

TYPE OF ORGANIZATION	DESCRIPTION
Trade Association	Organizations that represent businesses/employers in a specific industry
Business Association	Organizations that represent businesses/employers more broadly and may include businesses/employers across multiple industries
Employer	For the purpose of SHIP grants, Employers are those entities that are seeking funding for projects that would benefit their own workplace and employees
Labor Union	Organizations that represent employees – these tend to be industry specific
Employee Organizations	Less formalized organizations that represent a group of employees *employee organizations, associations, cooperatives, and similar groups whose primary purpose is to serve the welfare of employees or to provide services to employees*
Group of Employees	One or more employees from the same employer
Joint Business/ Labor Group	A collaborative group that is both made up of business and labor groups and/or their representatives addressing needs in specific industries
Other	Any entity or group that is not seeking to address the needs in their own workplace, industry, trade, etc; or those not seeking to address the needs of their own employees, business or of those they represent.
-Third Party Organizations	Organizations who provide the activities outlined in the proposal as a part of the work they conduct on an ongoing basis (not directed at their own employees) i.e.: - safety consultation firm - vocational counseling firm
- Educational Institution	University, college, etc.
- Self-insured Employers	Employers who are not covered under the state funded workers compensation system

### Do you need a partner?

Generally all organizations that fall under the “**other**” category would need a partner to be eligible.

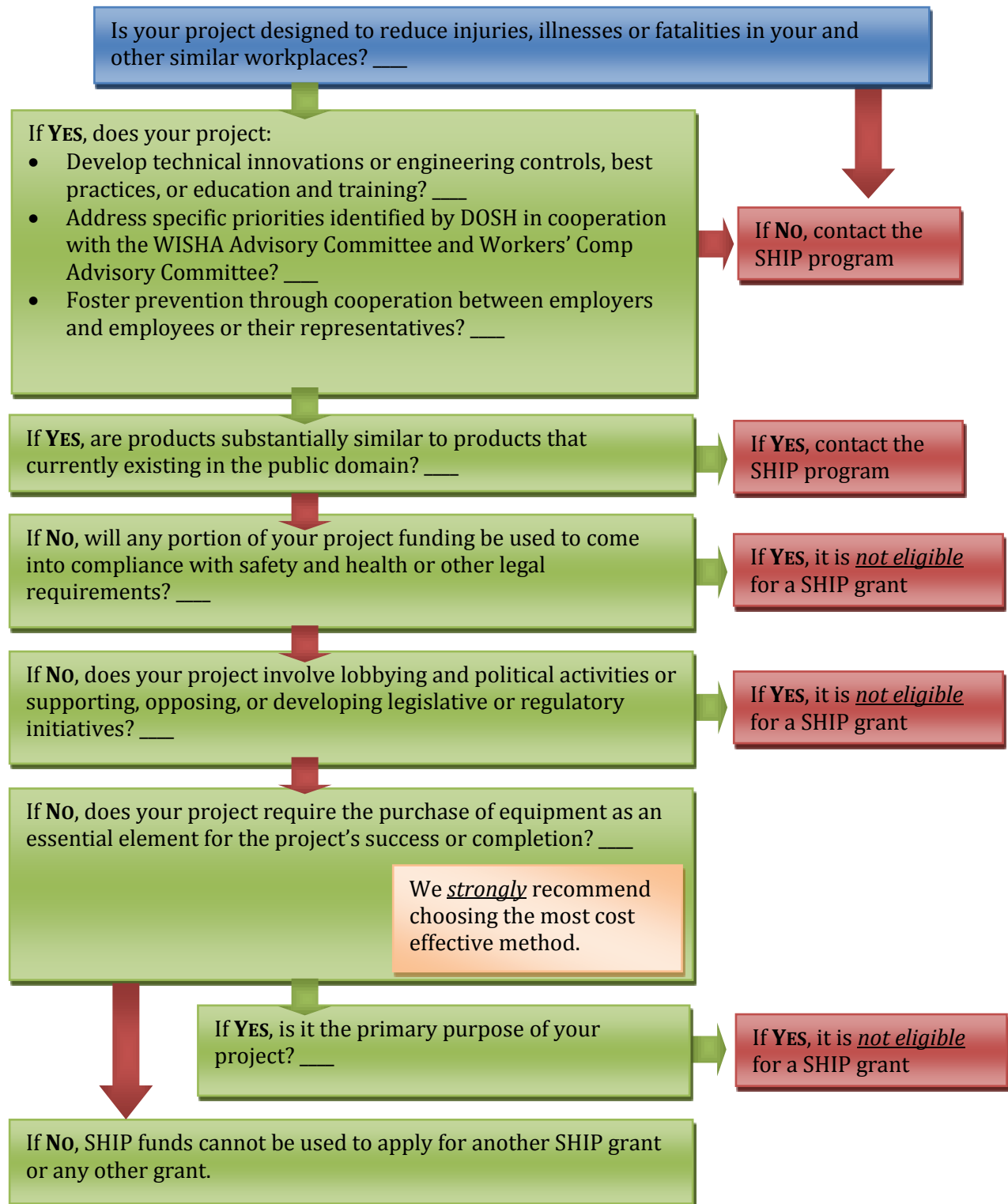
Others that may benefit from a partnership would be:

- Employee Organizations
- Groups of Employees (would likely need buy off from your employer)

Ideally, all products developed should be able to transfer or be usable by other entities doing similar types of work.

**NOTE:** All products produced, whether by the grantee or a subcontractor to the grantee, as a result of a SHIP grant are in the public domain and cannot be copyrighted, patented, claimed as trade secrets, or otherwise restricted in anyway.

## STEP 2 – SHIP S&H GRANT ELIGIBILITY: IS YOUR PROJECT ELIGIBLE?



**NOTE:** All products produced, whether by the grantee or a subcontractor to the grantee, as a result of a SHIP grant are in the public domain and cannot be copyrighted, patented, claimed as trade secrets, or otherwise restricted in anyway.