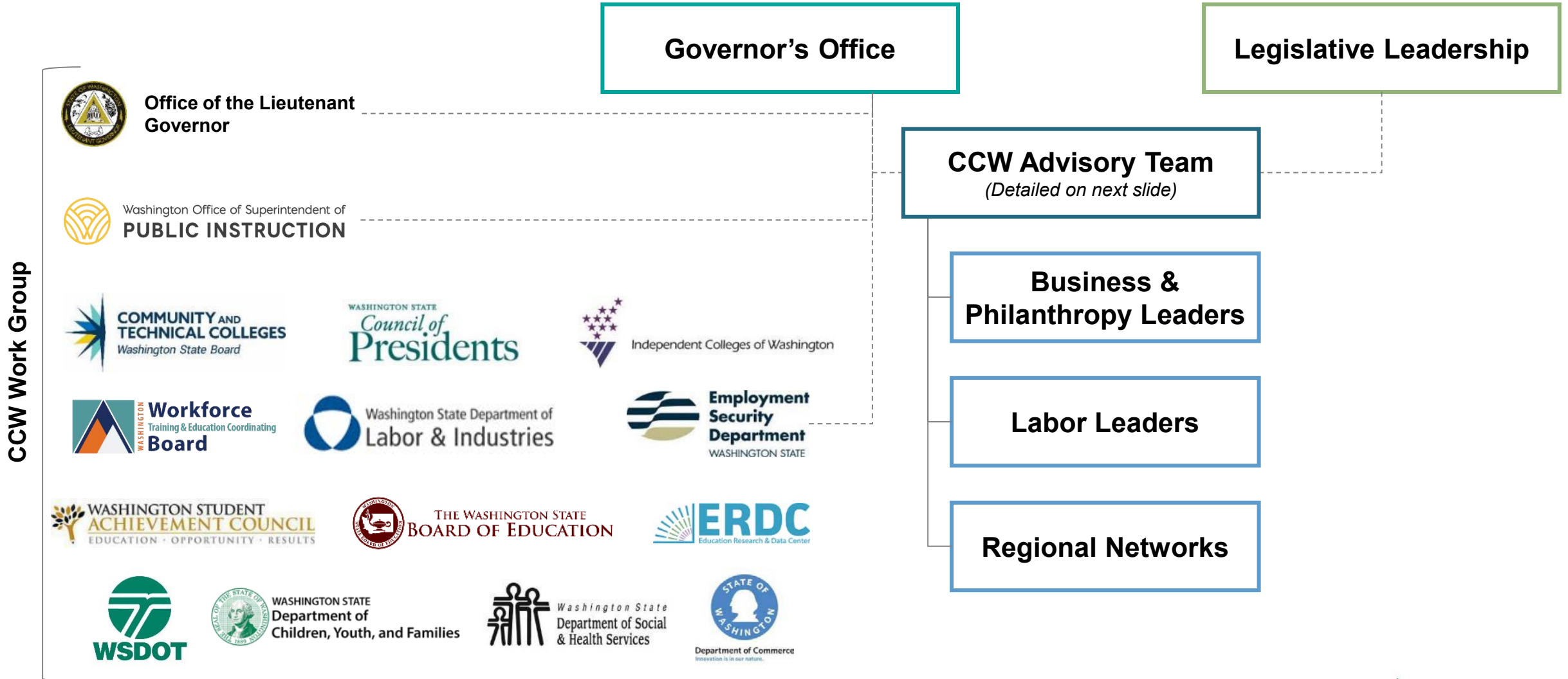




Update to the Apprenticeship and Training Council

July 2020

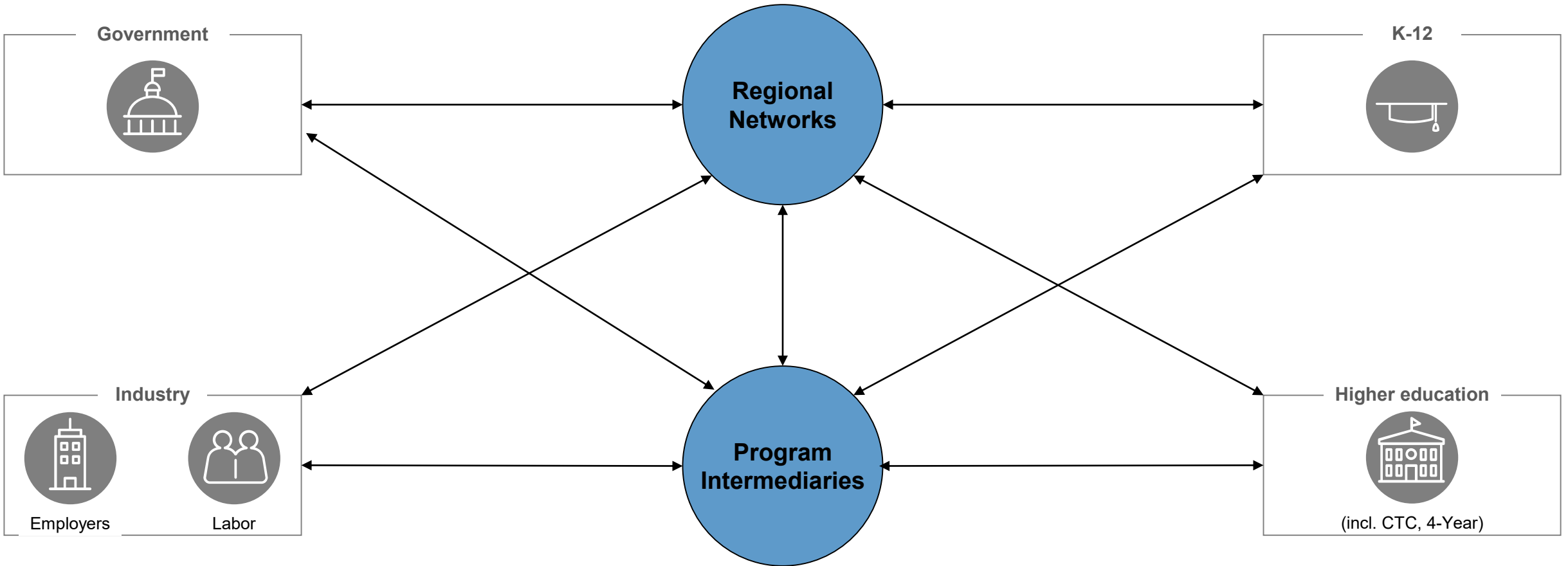
CCW Work Group and Advisory Team



Regional networks and program intermediaries provide the necessary connections

Employment

Education



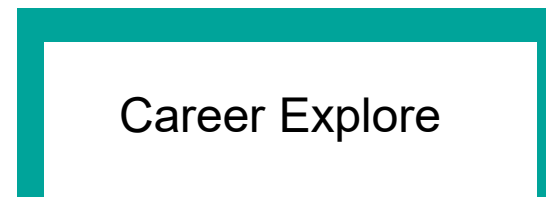
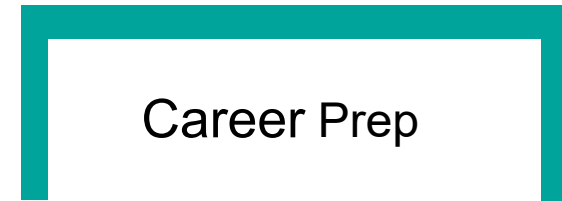
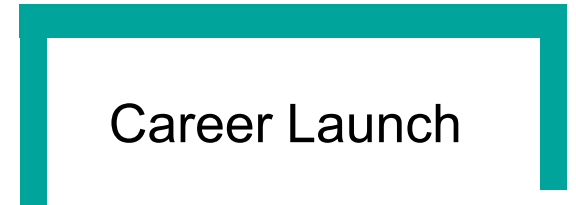
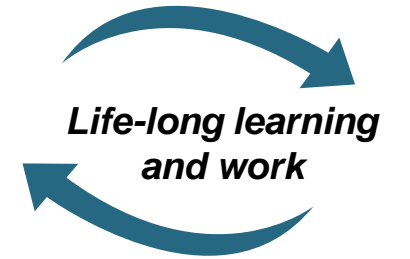
We are building the infrastructure to create new and grow existing CCL programs

Definition

Work-based programs with aligned classroom learning that culminate in a postsecondary credential*, producing a competitive candidate for meaningful employment

Career-specific instruction at a worksite or in a classroom for academic credit

Early exposure opportunities to careers and career options (e.g. career fairs, worksite tours)



*Postsecondary credential means certificate, or at least one year towards an associates or bachelor's degree

Investment into the Apprenticeship System: CCW Pilots

12 Regional Teams, aligned with WDC boundaries

\$3M

WIOA funds invested*
*plus local leverage funding, not included in \$3 million figure

580 Apprentices served

170 Public outreach events

36 New training agents

CCW Investment into Apprenticeship Continued:

Category	Administrator	Amount	Funding Details
<u>Program Expansion</u>	ESD	\$1.5 M	<ul style="list-style-type: none"> Competitive grants to create and expand Registered Apprenticeships or Recognized Pre-Apprenticeships: ANEW, AJAC, iTAC, SEIU Training Fund, CFA
<u>Equipment</u>	SBCTC, OSPI	\$300 K	<ul style="list-style-type: none"> Capital equipment funding: Roofers, Heat & Frost Insulators, Sprinkler Fitters, Ironworkers
<u>Enrollments</u>	SBCTC, OSPI	\$830 K	<ul style="list-style-type: none"> Funding to expand enrollment: Ironworkers, Carpenters, Concrete Finishers, Insulators, Sheet Metal, Medical Assisting, and Pharmacy Tech
Total Funding		\$2.63 M	

Regional Networks and CCL Coordinators



Network: Kareen Borders
borders@skschools.org

CCL Coordinator: Kimberly Hetrick
khetrick@oesd114.org

Counties: Clallam, Jefferson, Kitsap, and Mason



Network: Joy Emory
joy.emory@workforcesnohomish.org

CCL Coordinator: Bre Urness-Straight
burnessstraight@nwsed.org

Counties: Island, San Juan, Skagit, Snohomish, and Whatcom



Network: Sue Kane
suek@ncesd.org

CCL Coordinator: Tami McBride
tamim@ncesd.org

Counties: Chelan, Douglas, Grant, and Okanogan



Network: Phyllis Harvey-Buschel
phyllis@wabsalliance.org

CCL Coordinator: Walter Jackson
wjackson@psed.org

Counties: King and Pierce



Network: Cassidy Peterson
cpeterson@greaterspokane.org

CCL Coordinator: Dennis Conger
dconger@esd101.net

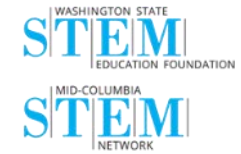
Counties: Adams, Ferry, Lincoln, Pend Oreille, Spokane, Stevens, and Whitman



Network: Lorie Thompson
lthompson@esd113.org

CCL Coordinator: Pat Lange
plange@esd113.org

Counties: Grays Harbor, Lewis, Mason, Pacific, and Thurston



Network: Debra Bowen
deb@STEMlearning.org

CCL Coordinator: Greg Fancher
gfancher@esd123.org

Counties: Asotin, Benton, Columbia, Franklin, Garfield, and Walla Walla



Network: Vickei Hrdina
vickei.hrdina@esd112.org

CCL Coordinator: Scott Culbertson
scott.culbertson@esd112.org

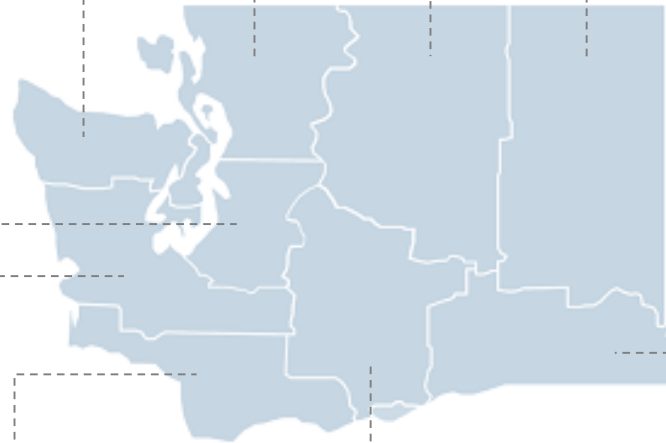
Counties: Clark, Cowlitz, Klickitat, Pacific, Skamania, and Wahkiakum



Network: Mark Cheney
mark.cheney@esd105.org

CCL Coordinator: Hugo Moreno
Hugo.moreno@esd105.org

Counties: Grant, Kittitas, Klickitat, and Yakima





Anna Nikolaeva
anikolaeva@esd.wa.gov
360-338-2834